

**NOTES:**

Allowable bearing pressure = 100kPa  
 Dependable bearing pressure = 150kPa

Refer to Architects Drawings for all setout dimensions, recesses and service positions

Internal slab thickenings and pad foundations to be accurately set out using the Architects drawings  
**DO NOT SCALE FROM THIS DRAWING**

Foundations and slab to be 25Mpa (min)

**Cover:**

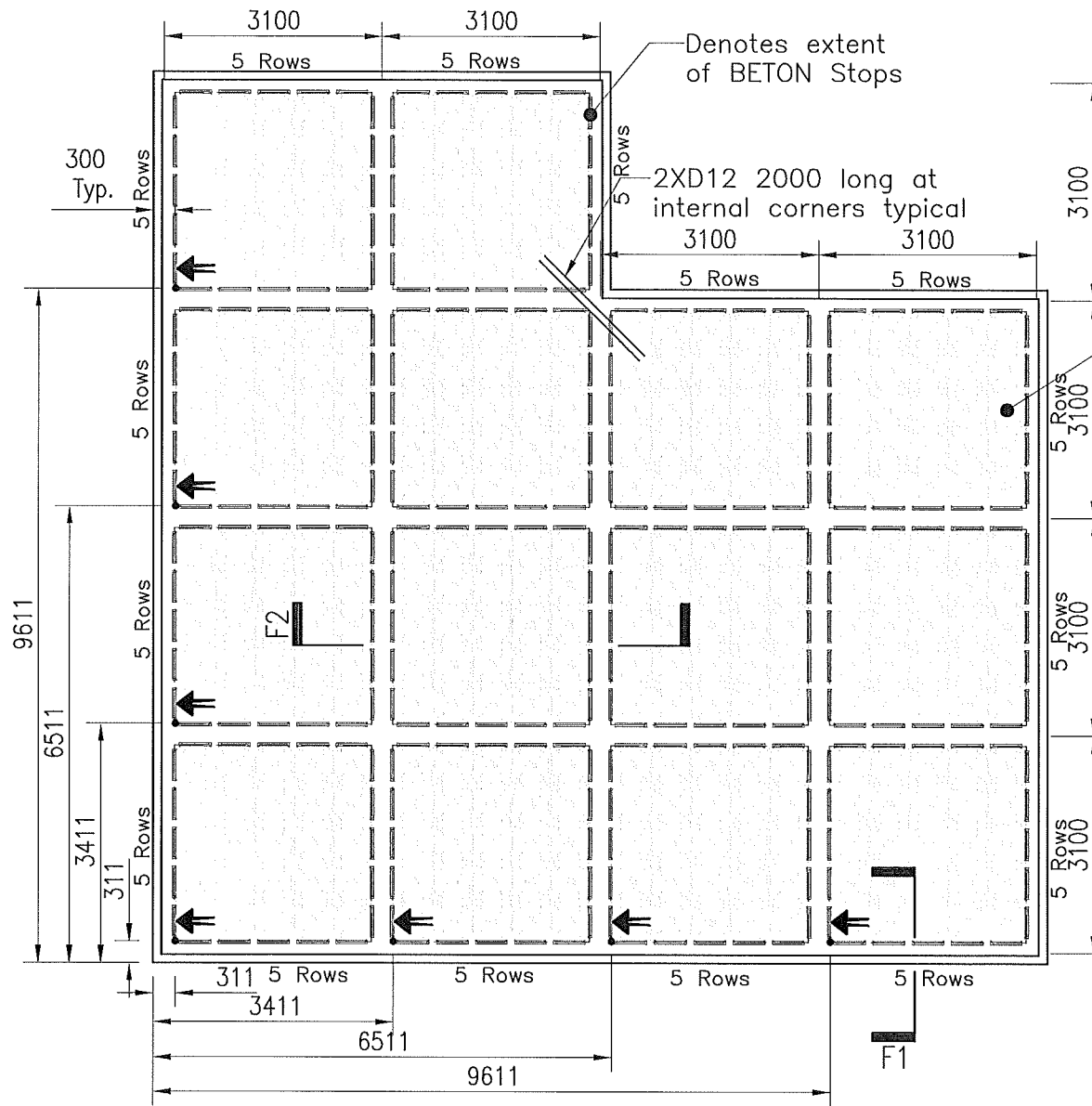
Cast against DPM = 50mm  
 Within Ribs: Side cover = 40mm

**Surface Finishes: (NZS 3144:1987)**


Concealed work = F1  
 Exposed edges of foundation = F5  
 Floor slab = U3

**Reinforcing:**

SYMBOL	TYPE
R	Structural grade plain bars to NZS 3679.1 (300 MPa)
D	Deformed bars grade 300E to NZS 4671 (300 MPa)
XR	Plain bars grade 500E to NZS 4671 (500 MPa)
XD	Deformed bars grade 500E to NZS 4671 (500 MPa)



345 thick Cupolex flooring system with Hurricane SE72 mesh 40mm top cover on DPC.

 **Start Dome**  
 Left to Right Then Top to Bottom

**QUANTITIES :**

Total Floor area	= 142 m2
Total Perimeters	= 50.80 m
No. off Cupolex H26	= 350
No. Beton stops	= 280
Concrete volume	= 29.32 m3

(Excluding piles, brick veneer rebates including 15% site tolerance )

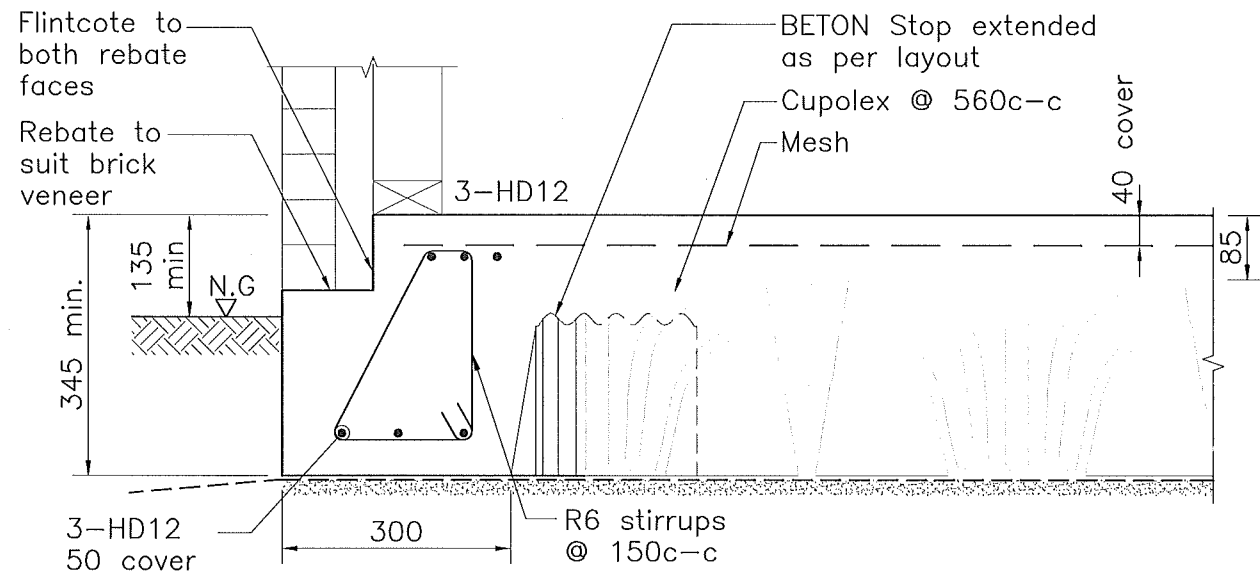
**NOTE 3:**  
 Pre-pour slab inspection must be carried out by HFC: Civil & Structural (South) Ltd to enable to issue PS4 construction review.  
 Contact Phone no: (03) 339 7000

**NOTE 4:**  
 Founding conditions/cut building platform to be inspected by Constructure Structural Engineering Ltd or geotechnical engineer. 100kPa minimum allowable bearing capacity to be confirmed.

**NOTE 1:**  
 Poorly graded river gravels (tailings or 20/40 rounded river stone) that have commonly been used in Christchurch as subgrade material shall not be used. This type of material is prone to forming unstable stone arrangements (bridges) that may collapse with future vibrations leading to a localised loss of support to the overlying slab.

**NOTE 2:**  
 The enclosed slab design must use Allied design mix concrete (25Mpa).

F1



F2

